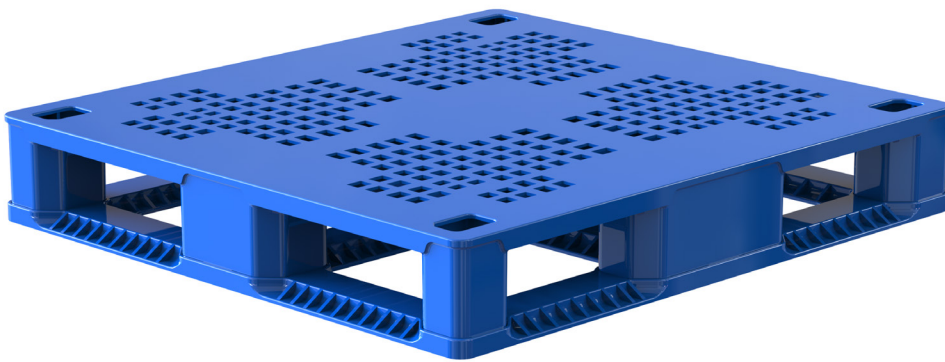


Double Leg Ratchet 36x39 Pallet



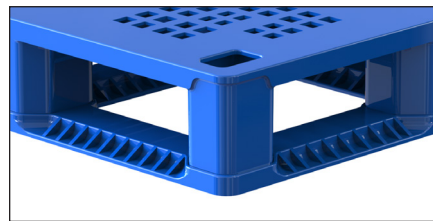
Edge
Rackable

Features:

- 100% recyclable FDA approved materials (HDPE)
- Structural foam injected molded for durability, close tolerances and stability
- Telescoping double legs provide twice the forklift damage protection of common single walled pallets
- Innovative ratchet fastening system: 3X stronger than welded or snap construction
- Highly durable & easy to clean
- Unique lower deck design includes first ever pallet jack guide that prevents related damage
- 4-way entry for forklift and pallet jacks
- Intermittent perimeter lip
- Molded-in or hot-stamped logo/company ID
- Rubber grommets

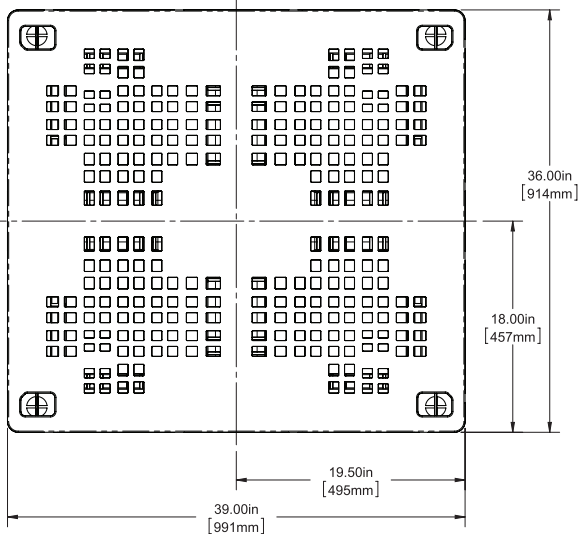


Double wall
with ratchet fastening

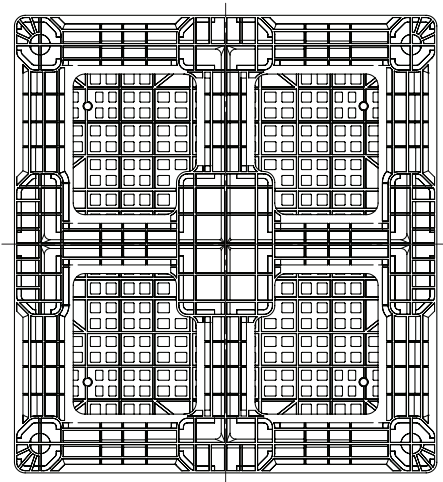


Unique lower deck design

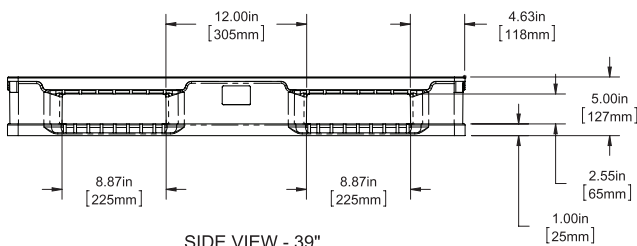




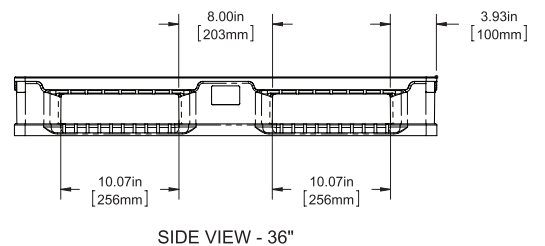
TOP VIEW



BOTTOM VIEW



SIDE VIEW - 39"



SIDE VIEW - 36"

36" X 39" Double Leg Ratchet Pallet

DIMENSIONS				LOAD RATINGS (lbs.)		TRUCKLOAD CAPACITY
Width	Length	Height	Weight	Static	Dynamic	53'
36 in.	39 in.	5 in. or 6 in.	41 lbs.	20,000	4,000	5 in. 680 6 in. 578