

Maximize Profitability, Productivity, and Hygiene with the Nestable Pallet



- 40" x 48" Footprint
- Maximize Return Logistics
- Reduce Packaging Costs
- Eliminate Wood Debris
- Reduce Storage Space
- Leg Options to Match Existing Floats

Call 1-877-444-7225 (RACK)
1-610-325-7500
info@prostack.com
www.prostack.com



Polymer Solutions International, Inc.
Where Ideas Become Solutions

updated 01/10/2017
©2016 Polymer Solutions International, Inc.
Product specifications may change without notice.

Product Specifications

Length	48 in (1219 mm)
Width	40 in (1016 mm)
Height	6.5 in (165 mm)
Weight	29 lb (11.8 kg)
Forklift Clearance (48" Side)	29 x 4 in (737 x 102 mm)*
Forklift Clearance (40" Side)	28 x 4 in (711 x 102 mm)*
Nesting Increment	2.5 in (63.5 mm)
Dynamic Load Limit	3,000 lb (1,364 kg)
Static Load Limit	20,000 lb (9,091 kg)

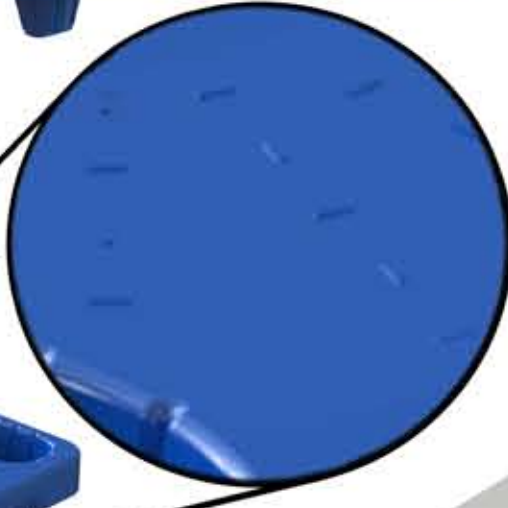
* May vary slightly depending on leg selection



Product Features

- Grommets provide an optional added defensive against product slip
- Easily cleaned surface
- Large handles aid handling of empty pallets
- Nestable legs minimize idle pallet storage and maximize shipping efficiencies

Non-skid surface improves load integrity



Call 1-877-444-7225 (RACK)
1-610-325-7500
info@prostack.com
www.prostack.com



Polymer Solutions International, Inc.
Where Ideas Become Solutions